

How Do You Increase Comfort



While
Improving
**Patient
Outcomes?**

**MINI
ONE[®]**

Balloon & Non-Balloon Buttons

Three Steps to a Better Balloon Button

1 Reduce Leaks

If your patients' comfort and outcome are being compromised by leaks and their related granulation tissue or erosion, you should switch to the Mini ONE® Balloon.



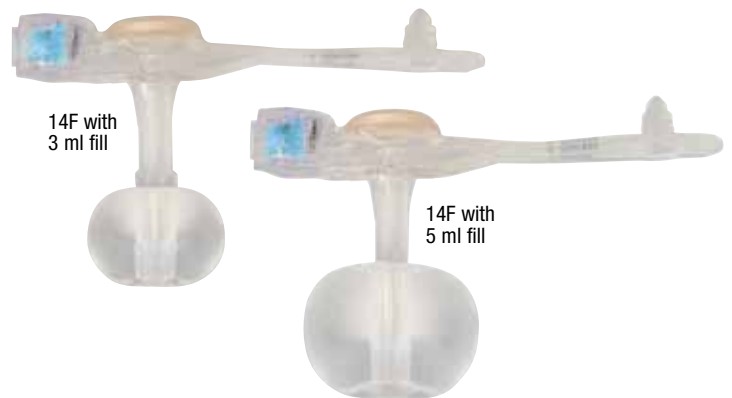
The Mini ONE® Balloon Button is shaped like an apple to cover more surface area and minimize leaks at the gastrostomy site. It seals better to reduce gastric ulceration.

Other balloon designs have less surface area coverage, and can result in more leakage.

Customizable Balloons Help Stop Leaks

Mini ONE® balloon fill volume can be easily adjusted for a custom-fit, reducing leaks and improving patient comfort. Our more durable silicone material permits fill variations to assure the proper fit.

Other balloon button manufacturers strongly recommend a single fill volume (5 ml). Patients don't come in one size and neither should their balloons.



Optional Introducer/Stiffener Makes Insertion Easier

Mini ONE® Buttons are made of a very soft and flexible silicone... that's why they are so comfortable! Being soft and flexible also means that placement of the Mini ONE® Button is easier if you use the optional stiffener that comes with each button.



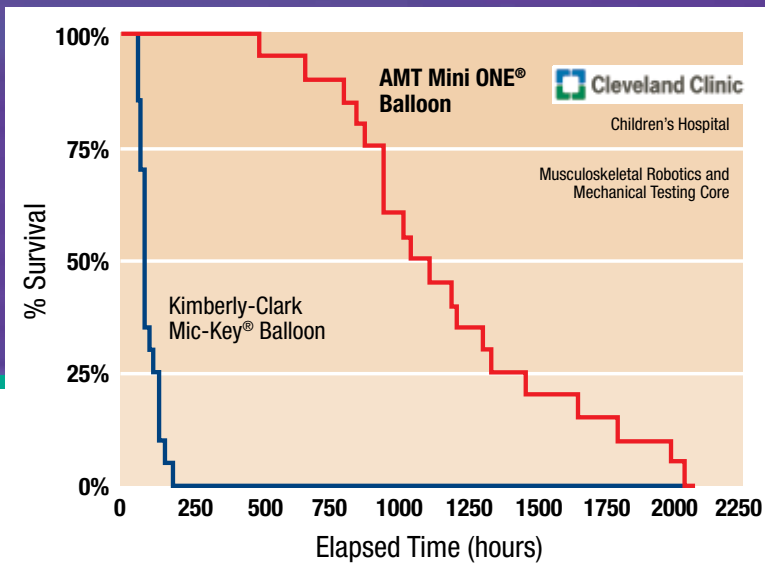
Mini ONE® Balloon Button Balloon Fill Volumes

French Size	Minimum	Recommended	Maximum
12F	2 ml	2.5 ml	3 ml
14F	3 ml	4 ml	5 ml
16F	4 ml	6 ml	8 ml
18F	6 ml	8 ml	10 ml
20F	7 ml	10 ml	15 ml
24F	7 ml	10 ml	15 ml

Videos on how to clean and use the Mini ONE® balloon button are available at www.appliedmedical.net

If your Balloon Mini ONE® Button was placed surgically, consult with your healthcare provider before adjusting fill volumes

Side-by-Side Product Comparison
Balloon Life: Mini ONE® vs. Mic-Key®



2 Increase Balloon Life

Tests at the Cleveland Clinic have shown significantly longer balloon life under controlled laboratory acid test conditions.

- Balloon is made from the highest grade medical silicone
- Stronger and more durable than other balloon buttons
- More compliant and better able to withstand stomach contractions

3 Reduce Skin Irritation and Discomfort

- No hard, bulky external bolster means a lower profile
- Less obtrusive external bolster is much more comfortable for patient
- Flexible bolster is easier to clean around and less likely to create trauma to the stoma site
- The tapered transition from the shaft to the external bolster creates a better seal outside the stomach

Mini ONE® Balloon Button (MIC-KEY® feed set compatible)

12 FRENCH		14 FRENCH		16 FRENCH		18 FRENCH		20 FRENCH		24 FRENCH	
Stoma Length (cm)	Order Number	Stoma Length (cm)	Order Number	Stoma Length (cm)	Order Number	Stoma Length (cm)	Order Number	Stoma Length (cm)	Order Number	Stoma Length (cm)	Order Number
0.8	M1-5-1208	0.8	M1-5-1408	1.0	M1-5-1610	1.0	M1-5-1810	1.0	M1-5-2010	1.5	M1-5-2415
1.0	M1-5-1210	1.0	M1-5-1410	1.2	M1-5-1612	1.2	M1-5-1812	1.2	M1-5-2012	1.7	M1-5-2417
1.2	M1-5-1212	1.2	M1-5-1412	1.5	M1-5-1615	1.5	M1-5-1815	1.5	M1-5-2015	2.0	M1-5-2420
1.5	M1-5-1215	1.5	M1-5-1415	1.7	M1-5-1617	1.7	M1-5-1817	1.7	M1-5-2017	2.3	M1-5-2423
1.7	M1-5-1217	1.7	M1-5-1417	2.0	M1-5-1620	2.0	M1-5-1820	2.0	M1-5-2020	2.5	M1-5-2425
2.0	M1-5-1220	2.0	M1-5-1420	2.3	M1-5-1623	2.3	M1-5-1823	2.3	M1-5-2023	2.7	M1-5-2427
2.3	M1-5-1223	2.3	M1-5-1423	2.5	M1-5-1625	2.5	M1-5-1825	2.5	M1-5-2025	3.0	M1-5-2430
2.5	M1-5-1225	2.5	M1-5-1425	2.7	M1-5-1627	2.7	M1-5-1827	2.7	M1-5-2027	3.5	M1-5-2435
2.7	M1-5-1227	2.7	M1-5-1427	3.0	M1-5-1630	3.0	M1-5-1830	3.0	M1-5-2030	4.0	M1-5-2440
3.0	M1-5-1230	3.0	M1-5-1430	3.5	M1-5-1635	3.5	M1-5-1835	3.5	M1-5-2035	4.4	M1-5-2444
3.5	M1-5-1235	3.5	M1-5-1435	4.0	M1-5-1640	4.0	M1-5-1840	4.0	M1-5-2040		
4.0	M1-5-1240	4.0	M1-5-1440	4.4	M1-5-1644	4.4	M1-5-1844	4.4	M1-5-2044		
		4.4	M1-5-1444			5.0	M1-5-1850				
		5.0	M1-5-1450			6.0	M1-5-1860				
		5.5	M1-5-1455								
		6.0	M1-5-1460								
		6.5	M1-5-1465								

See complete list of AMT feeding extension sets on Accessories page.



All Mini ONE® Buttons are Mic-Key® Feed Set Compatible

All Mini ONE® products accept either Mini ONE® or Mic-Key® feed sets.

Capsule Style Buttons Reduce Pain During Insertion

They're Unique

The AMT Mini ONE® Capsule Non-Balloon Button design offers advantages found nowhere else:

- No balloon to fail, so replacements occur less often
- Capsule design dramatically reduces pain during insertion
- Button shaft is as narrow as that of a balloon button, and the capsule is self-lubricating for easy insertion
- Pull-away tether releases capsule to easily deploy internal bolster
- Removal tool distends bolster to a smaller profile
- Ideal for patients who don't tolerate balloon buttons
- Internal bolster is smaller than a balloon (less likely to block the pylorus)
- Internal dome provides more holes/openings for better feeding and venting

Easy to Insert (Like a balloon device)
+
Long Life (Like a non-balloon device)



Non-deployed
bolster for ease
of insertion

Deployed
bolster

*Internal bolster that distends
to a smaller profile during
placement and removal*



- 1 Device is inserted.
- 2 When tether is pulled, the capsule material is split.
- 3 Capsule material falls away, dissolves rapidly and passes.

All Mini ONE® Buttons are Mic-Key® Feed Set Compatible

All **Mini ONE®** products accept either **Mini ONE®** or **Mic-Key®** feed sets. See complete list of AMT feeding extension sets on Accessories page.

Note: Capsule is self lubricating and will begin to dissolve as soon as lubricant is applied. Lubricate capsule only immediately before placement.



Removal tool distends internal bolster for ease of removal.

Tool comes with each kit and can be ordered separately. Call or see website for order information.



A Better Valve Means Less Leakage

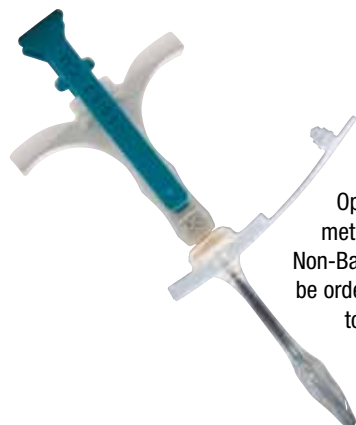
All AMT Mini ONE® products have a proximally-located reflux valve which allows feeding and decompression with only one accessory. The anti-reflux design eliminates leakage through the device.

Mini ONE® Capsule Non-Balloon Button (MIC-KEY® feed set compatible)

14 FRENCH		18 FRENCH		20 FRENCH		24 FRENCH	
Stoma Length (cm)	Order Number	Stoma Length (cm)	Order Number	Stoma Length (cm)	Order Number	Stoma Length (cm)	Order Number
1.0	M1-2-1410	1.2	M1-2-1812	1.7	M1-2-2017	1.7	M1-2-2417
1.2	M1-2-1412	1.5	M1-2-1815	2.4	M1-2-2024	2.4	M1-2-2424
1.5	M1-2-1415	1.7	M1-2-1817	3.4	M1-2-2034	3.4	M1-2-2434
1.7	M1-2-1417	2.0	M1-2-1820	4.4	M1-2-2044	4.4	M1-2-2444
2.0	M1-2-1420	2.4	M1-2-1824				
2.5	M1-2-1425	3.0	M1-2-1830				
3.0	M1-2-1430	3.4	M1-2-1834				
		4.4	M1-2-1844				

* Kit includes removal tool

Non-Capsule Alternative



Optional insertion method: Mini ONE® Non-Balloons can also be ordered with easy-to-use ratcheted insertion tool.

Mini ONE® Non-Balloon Button (MIC-KEY® feed set compatible)

14 FRENCH		18 FRENCH		20 FRENCH		24 FRENCH	
Stoma Length (cm)	Order Number	Stoma Length (cm)	Order Number	Stoma Length (cm)	Order Number	Stoma Length (cm)	Order Number
1.0	M1-1-1410	1.2	M1-1-1812	1.7	M1-1-2017	1.7	M1-1-2417
1.2	M1-1-1412	1.5	M1-1-1815	2.4	M1-1-2024	2.4	M1-1-2424
1.5	M1-1-1415	1.7	M1-1-1817	3.4	M1-1-2034	3.4	M1-1-2434
1.7	M1-1-1417	2.0	M1-1-1820	4.4	M1-1-2044	4.4	M1-1-2444
2.0	M1-1-1420	2.4	M1-1-1824				
2.5	M1-1-1425	3.0	M1-1-1830				
3.0	M1-1-1430	3.4	M1-1-1834				
		4.4	M1-1-1844				

Mini ONE[®] Button Feeding Sets and Accessories

Fewer Pullouts

Our new Y-Port is made from a special elastomer that helps secure the stepped connector with a “sticky” friction fit.

If pullouts persist, ask for an AMT Clamp™ device to totally eliminate disconnects.

The new purple color signifies “enteral feeding” to avoid misconnections, and the translucent material aids visualization so you can see the flow through the Y-Port walls.



AMT Clamp™
Device

All Mini ONE[®] Buttons are
Mic-Key[®] Feed Set Compatible

All Mini ONE[®] products accept either
Mini ONE[®] or Mic-Key[®] feed sets.

Purple is the new standard

to avoid dangerous tubing misconnects

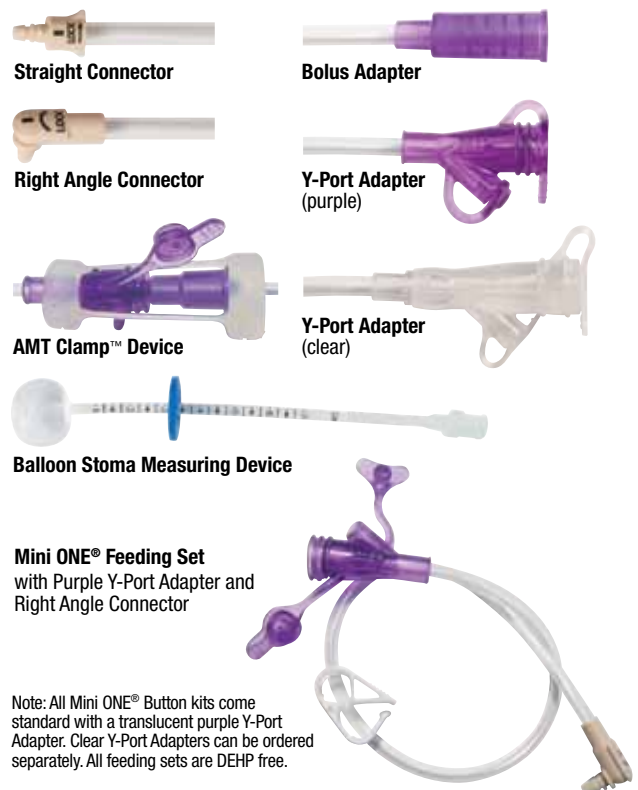
In a 2006 Sentinal Event Alert,
JCAHO identified tubing misconnections
as “a persistent and potentially
deadly occurrence.”†

Mini ONE[®] Feeding Sets (Mic-Key[®] Equivalents)

Catalog No.	Description	Qty/Box
Re-Order Numbers for PURPLE ADAPTERS		
* 8-1255	12" Right Angle Connector w/ Y-Port Adapter (purple)	10
8-2455	24" Right Angle Connector w/ Y-Port Adapter (purple)	10
8-1221	12" Right Angle Connector w/ Bolus Adapter (purple)	10
8-2421	24" Right Angle Connector w/ Bolus Adapter (purple)	10
* 8-1211	12" Straight Connector w/ Bolus Adapter (purple)	10
8-2411	24" Straight Connector w/ Bolus Adapter (purple)	10
8-0211	2" Straight Connector w/ Bolus Adapter (purple)	10
Re-Order Numbers for CLEAR ADAPTERS		
8-1222	12" Right Angle Connector w/ Y-Port Adapter (clear)	10
8-2422	24" Right Angle Connector w/ Y-Port Adapter (clear)	10
8-1212	12" Straight Connector w/ Y-Port Adapter (clear)	10
8-0212	2" Straight Connector w/ Y-Port Adapter (clear)	10
4-3000	AMT Clamp™ Device	

* Included in each Mini ONE[®] Kit. For ordering information call 800-869-7382

Contact your insurance provider regarding the number of feeding extension sets you are allowed per month



Straight Connector

Bolus Adapter

Right Angle Connector

Y-Port Adapter
(purple)

AMT Clamp™ Device

Y-Port Adapter
(clear)

Balloon Stoma Measuring Device

Mini ONE[®] Feeding Set
with Purple Y-Port Adapter and
Right Angle Connector

Note: All Mini ONE[®] Button kits come standard with a translucent purple Y-Port Adapter. Clear Y-Port Adapters can be ordered separately. All feeding sets are DEHP free.

† Sentinal Event Alert, Joint Commission on Accreditation of Healthcare Organizations, Issue 36, April 3, 2006. http://www.jointcommission.org/SentinalEvents/SentinalEventAlert/sea_36.htm

Initial Placement Gastrostomy Kit

- Can be used laproscopically, endoscopically or with fluoroscopic guidance
- Requires only one endoscopic pass, reducing trauma
- Eliminates the need for a secondary procedure to replace with a low profile device
- For use with 12-18F devices



Kit Contents

- Guidewire
- Introducer Needle, 18 Gauge
- Safety Scalpel, #11
- (3) Dilators (12, 18 & 22F)
- (2) Stiffeners (5 & 7F)
- Guidewire Compatible Balloon Stoma Measuring Device
- Water Soluble Lubricant
- (4) 4" x 4" Gauze

AMT Order Number

IP-1218 AMT Initial Placement Kit

Kit does not contain T-Fasteners or U-Stitches which are required for adhering stomach to the abdominal wall.

The I.P. Kit reduces the trauma associated with stoma tract development.

The physician can select from the most extensive range of replacement tubes available, including balloon or non-balloon, in low profile or traditional (long) G-tubes.



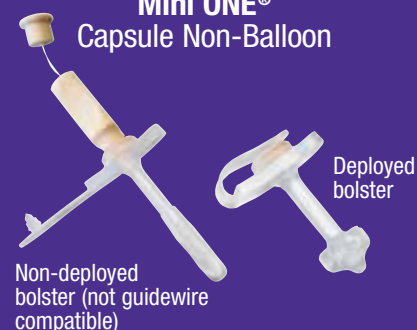
Double pouch packaging to maintain sterile environment

Low Profile

Mini ONE® Balloon

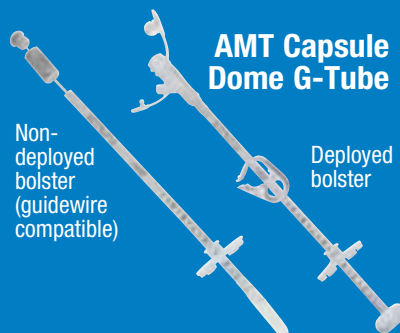


Mini ONE® Capsule Non-Balloon

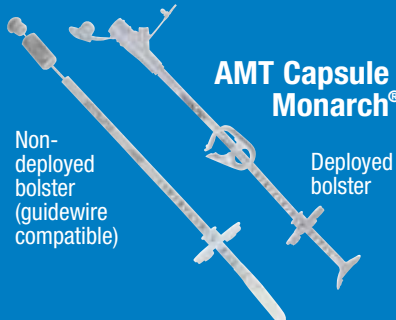


Traditional Length

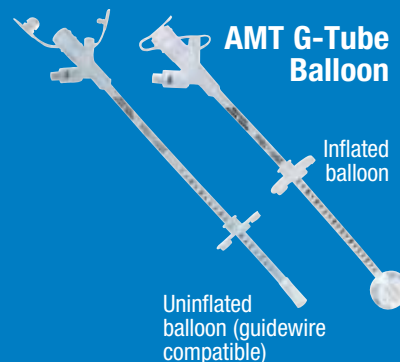
AMT Capsule Dome G-Tube



AMT Capsule Monarch®



AMT G-Tube Balloon



From the Leader in Enteral Device Innovation

We've been here from the beginning

Applied Medical Technology, Inc. was present at the birth and development of the Percutaneous Endoscopic Gastrostomy (PEG) movement. Our founder co-invented the first Button low profile feeding device, which AMT manufactured for distribution by C.R. Bard Inc.

Since then, AMT has continued to introduce innovative designs and materials to advance enteral feeding by increasing patient comfort while improving patient outcomes.



George J. Picha,
M.D., Ph.D., F.A.C.S.

Dr. Michael Gauderer and AMT founder, Dr. George Picha, co-invent Button
C.R. Bard distributes AMT Button and PEG

Applied Medical Technology, Inc. (AMT) is formed

1985

AMT manufactures first silicone PEG with Dr. Jeffrey Ponsky and Dr. Michael Gauderer, the developers of PEG



AMT develops and manufactures One Step Button Initial Placement Low Profile Device, nominated Physician's Choice of Best Products at DDW



1995

AMT develops and manufactures PEG and Button for Boston Scientific

Boston Scientific acquires AMT PEG and One Step Button lines

AMT introduces Suture Wrap Monarch G-Tube

AMT Bridle™ Nasal Tube Retaining Systems developed



AMT introduces line of Balloon Mini ONE® Buttons

AMT launches Capsule Monarch® and Capsule Mini ONE® Buttons



2000

AMT launches Initial Placement Gastrostomy Kit



AMT introduces the AMT Clamp™ Device



AMT launches the Mini® Button - first balloon button with no tip protrusion; also manufactured for Boston Scientific

2005

Balloon Mini ONE® Button design enhancements to improve fit in pediatric patients



2010

Balloon Mini ONE® Button
US Patent numbers 6,019,746 and D418,220
Capsule Products
US Patent number 6,896,665
AMT Clamp™ Product
US Patent number 6,375,231
Monarch® Products
US Patent numbers 6,364,858 and D406,355



8000 Katherine Boulevard
Brecksville, OH 44141

Toll-Free: 800-869-7382

E-mail: cs@appliedmedical.net

www.appliedmedical.net

An ISO 13485 Registered Company



C-3922-B Made in USA

Mini ONE and Monarch are registered trademarks and AMT Clamp and AMT Bridle are trademarks of Applied Medical Technology, Inc. © 2010 Applied Medical Technology, Inc. MIC-KEY is a registered trademark of Kimberly-Clark Worldwide, Inc.